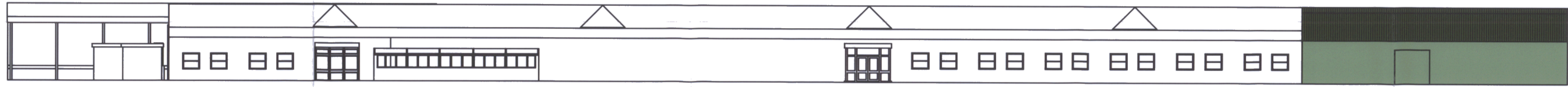
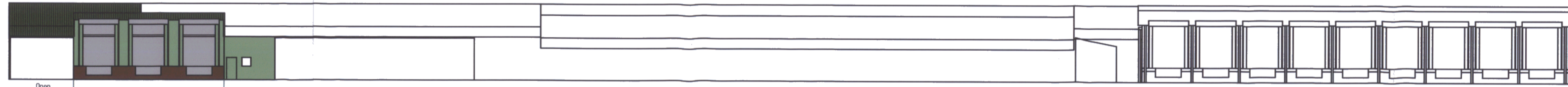


| REVISION HISTORY |             |      |          |
|------------------|-------------|------|----------|
| REV              | DESCRIPTION | DATE | APPROVED |
|                  |             |      |          |

A1



SOUTH ELEVATION



Open front to skip canopy

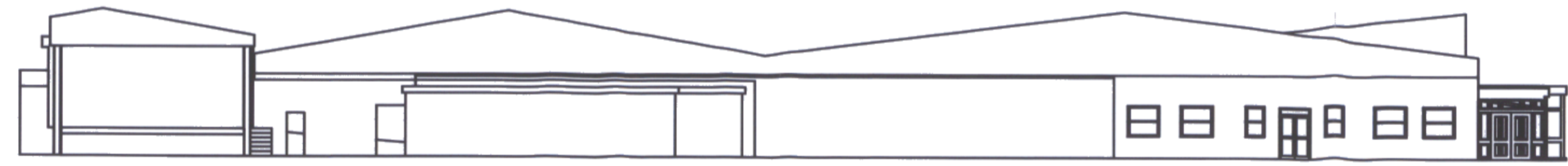
13500

Intake Bays

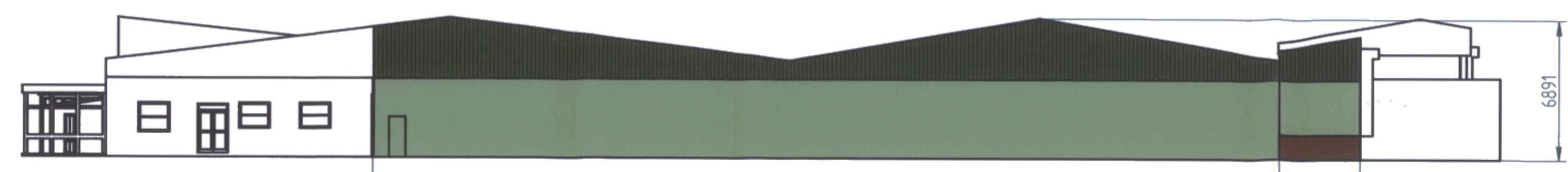
Existing Building

NORTH ELEVATION

Despatch Bays (see drawings VSL/09 and VSL/10)



WEST ELEVATION




EAST ELEVATION

1:200

BADNUTT & DEANE  
BOROUGH COUNCIL  
27 OCT 2008  
DEVELOPMENT CONTROL

Application No.  
008 - 69802

|  |              |          |  |
|--|--------------|----------|--|
| DRAWN  | NAME         | DATE     |   |
| CHECKED  | tim.breslain | 20/10/08 |  |
| ENG APPR   |              |          |  |
| MGR APPR   |              |          |  |
| UNLESS OTHERWISE SPECIFIED DIMENSIONS ARE IN MILLIMETERS |              |          | TITLE: Proposed Intake Bays - Elevations<br>SIZE: A1 DWG NO: VSL/08<br>FILE NAME: Intake elev.dft<br>SCALE: 1:200 WEIGHT: SHEET 1 OF 1 |