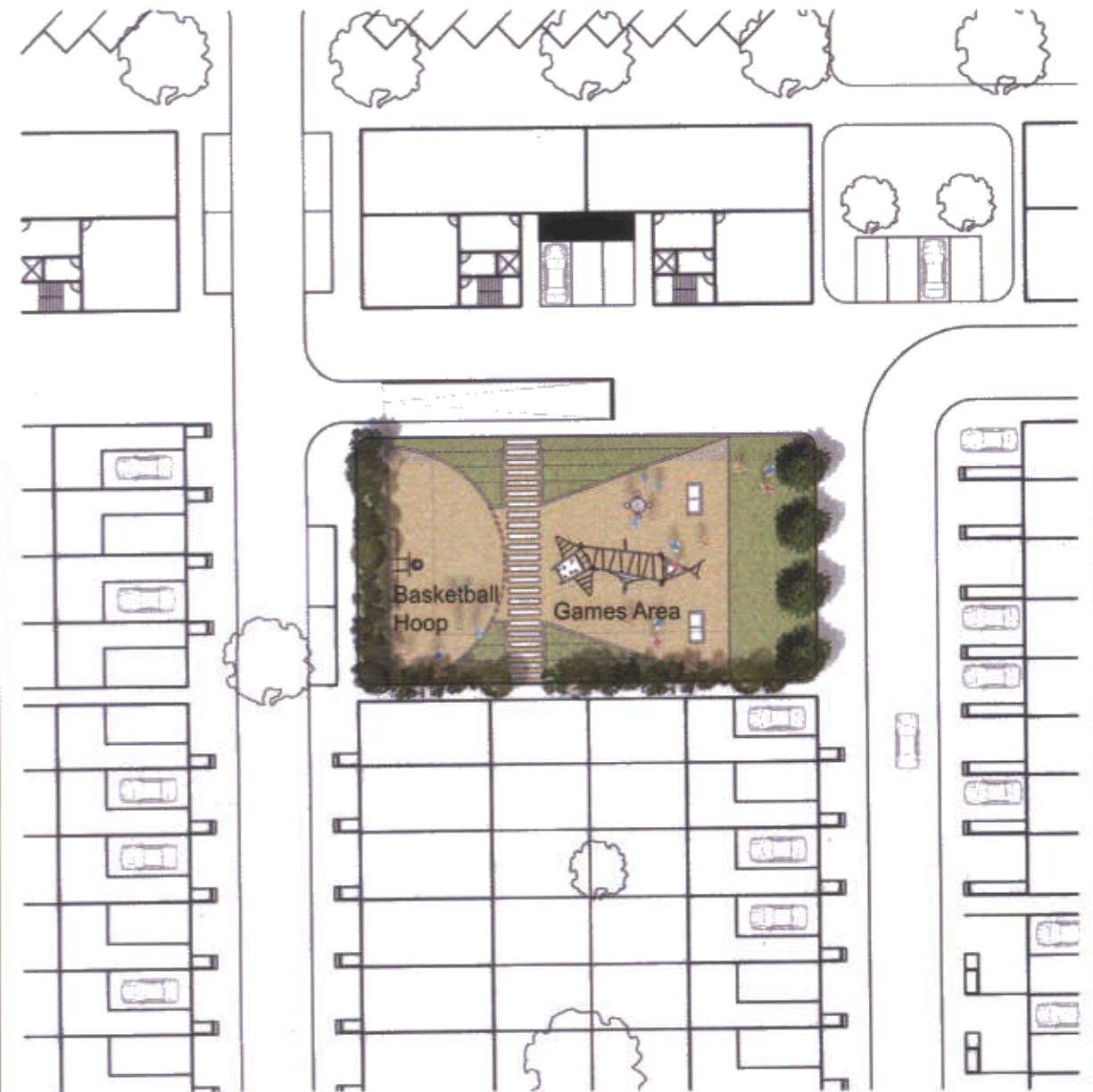


Detailed Landscape and Setting Plan-Area 1 1:500@A3



Detailed Landscape and Setting Plan-Area 2 1:500@A3

ADDITIONAL PLAN

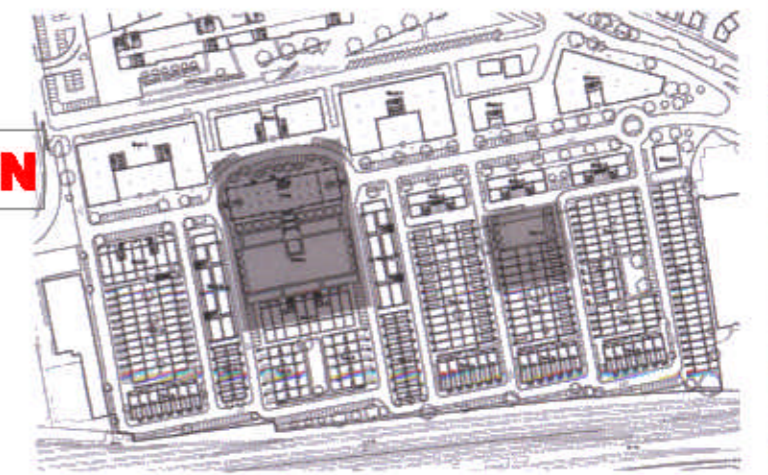


Image for indicative purposes only.	Rev	Date	Amendment	Date :	Project : Mixed Used Development Basingstoke		Job Ref.	Job no.	3W™
	A	28.01.2009	Issued for Outline planning	Scale @ A3	Checked	Title	ELB	126	
	© 3W Architecture Limited. All rights reserved.				1:500	SW	Open Space Plan		
	3W Architecture Limited registered in England.				Status		Drwg. no.	Rev.	
Company no. 3132871 Registered Office The Pines Boars Head East Sussex				Planning		126(12)105	A		
				Architect	3W Thames Wharf Studios Rainville Road London W6 9HA tel. 020 7835 5552 fax. 020 7835 5525 email. mail@3w.org				