

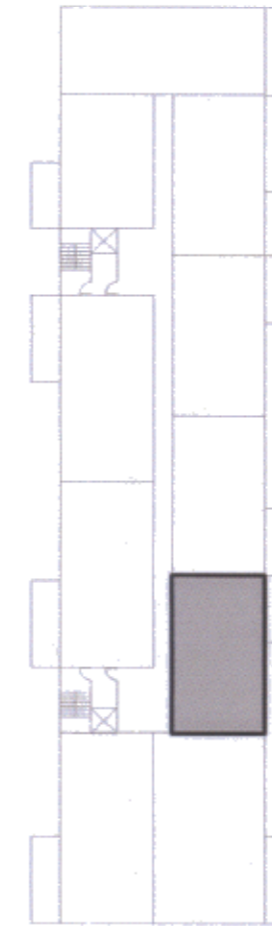
## Notes

Plan illustrates typical 2 bed apartment unit under 70sqm in line with policy C3.

Unit meets relevant Lifetime Mobility Standards.



**Typical 2 Bed Apartment**  
65sqm



**ADDITIONAL PLAN**

**Key Plan - Block B**

| Rev  | Date       | Amendment                   | Date:        | Project :   | Job Ref.   | Job no. |
|--|------------|-----------------------------|--------------|---|--|---------|
| A  | 30.01.2009 | Issued for Comment          | January 2009 | Mixed Used Development Basingstoke  | ELB  | 126     |
| B  | 04.02.2009 | Issued for Outline planning |              |   |  |         |
| © 3W Architecture Limited. All rights reserved.                        |            |                             | Scale @ A3   | Checked   | Title  |         |
| 3W Architecture Limited registered in England.                         |            |                             | 1:100        | SW  | Typical Apartment meeting Lifetime Mobility Standard |         |
| Company no. 3132871 Registered Office The Pines Boars Head East Sussex |            |                             | Status       | Drwg. no.   | Rev.   |         |
|  |            |                             | Planning     | 126(12)304  | B  |         |
|  |            |                             | Architect    | 3W Thames Wharf Studios Rainville Road London W6 9HA tel. 020 7835 5552 fax. 020 7835 5525 email. mail@3w.org |  |         |

**3W™**